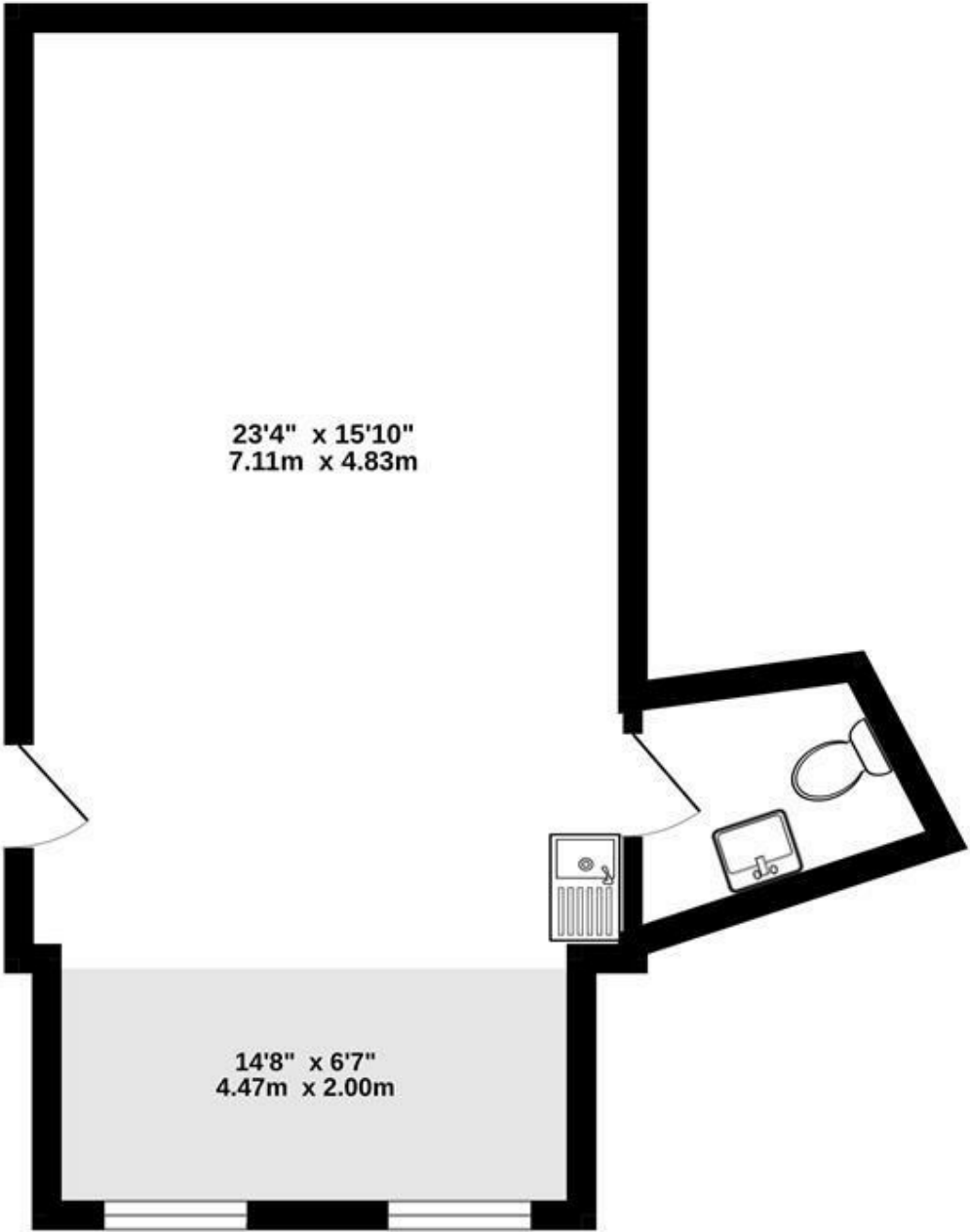


GROUND FLOOR  
525 sq.ft. (48.8 sq.m.) approx.



GROUND FLOOR

TOTAL FLOOR AREA : 525 sq.ft. (48.8 sq.m.) approx.

Whilst every attempt has been made to ensure the accuracy of the floorplan contained here, measurements of doors, windows, rooms and any other items are approximate and no responsibility is taken for any error, omission or mis-statement. This plan is for illustrative purposes only and should be used as such by any prospective purchaser. The services, systems and appliances shown have not been tested and no guarantee as to their operability or efficiency can be given.  
Made with Metropix ©2025

Gravity Estates  
18 Golders Green Road, London, NW11 8LL  
02083570810 sales@gravity-estates.com

GRAVITY  
estates

Gravity Estates  
18 Golders Green Road, NW11 8LL  
02083570810  
sales@gravity-estates.com  
www.gravity-estates.com



St Albans Lane, NW11 7QE

Welcome to this Ground Floor office located on St Albans Lane in the centre of Golders Green. This office space possesses one reception room, offering a good amount of space for various business needs.

Spanning 525 Sq Ft, this property provides a comfortable and functional working environment. The secure access ensures peace of mind.

Please note that bills such as electricity are excluded from the rent price. Only the service charge is included, covering any maintenance or cleaning of the communal areas. Also, no business rates are included.

The space is available for immediate occupancy, based on a 12-month contract with a 6-month break clause.

This is an excellent opportunity to secure a prime location for your business at a competitive rate.



